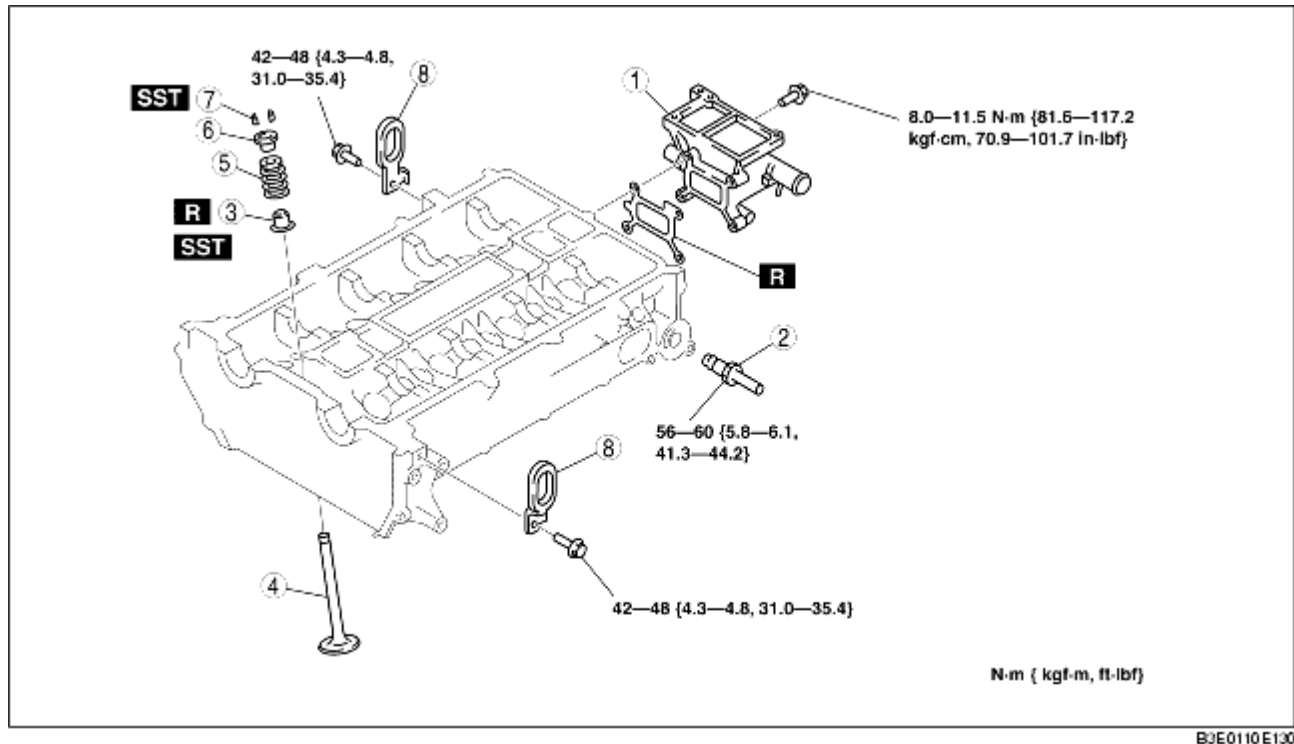


# CYLINDER HEAD (I) ASSEMBLY

B3E011002000210

1. Assemble in the order indicated in the table.



B3E0110E130

1	Water outlet case
2	EGR pipe
3	Valve seal (See <a href="#">Valve Seal Assembly Note</a> )
4	Valve
5	Valve spring
6	Upper valve spring seat
7	Valve keeper (See <a href="#">Valve Keeper Assembly Note</a> )
8	Engine hanger

## Valve Seal Assembly Note

1. Press the valve seal onto the valve guide by hand.
2. Lightly tap the **SST** using a plastic hammer.

## Valve Keeper Assembly Note

1. Install the valve keeper using the **SSTs**.

